

AERIAL RECONNAISSANCE TEAMS (ART)

2025

I. MISSION

As part of preliminary damage assessment, to deploy rapidly and fly over severely impacted areas providing reports on the extent and location of hurricane damage. Aerial Reconnaissance Teams (ARTs) will coordinate activities with the FEMA Rapid Needs Assessment (RNA) Team.

II. CONCEPT OF OPERATIONS

The ARTs are led by an ART Coordinator assigned from the State Emergency Response Team (SERT) Recovery Section. They schedule aerial reconnaissance according to requirements established by the SERT Planning Section. ARTs will be deployed immediately after a major hurricane impacts North Carolina and weather conditions permit. Two ARTs will deploy from the RDU airport at the National Guard Aviation Center and fly to counties impacted by a hurricane. One helicopter will fly the impacted area where the hurricane eye's center moved over land. The other helicopter will fly the eastern eye wall where hurricane winds are expected to have been most severe. Both helicopters will fly these areas, county by county, observing and noting the following:

- Severity of the damage;
- Specific impact information and locations, i.e. estimated houses damaged, roads washed away, bridges out, power lines down, etc.;
- Record video and digital images of the damage;
- Mark those areas that should be investigated in greater detail by an unmanned aerial vehicle (UAV) and, if possible, where a remote pilot could set up a nearby base of operations; and
- Determine what immediate state assistance may be needed.

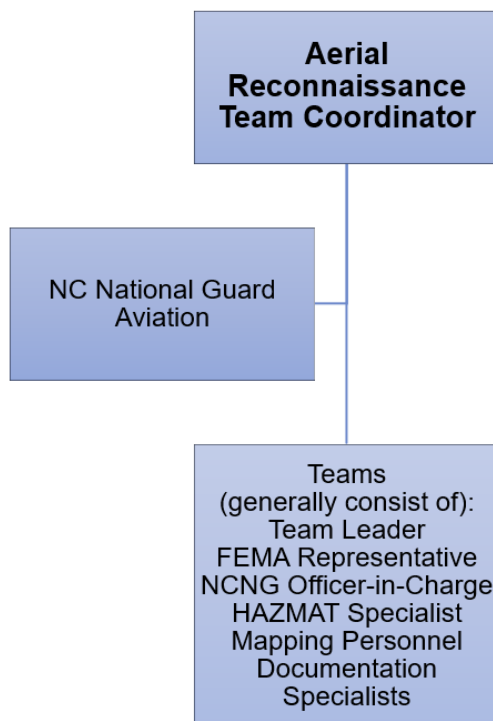
If possible, the information being recorded by the ARTs will be sent back to the State Emergency Operations Center (EOC) by one or more of the following methods:

- By voice transmission between the ART leader and the State EOC as fly-over occurs;
- By voice transmission using a satellite phone once the helicopter lands in an impacted county;
- By telephone once a team lands in an impacted area;
- By fax machine once a team lands in an impacted area; and
- By hand delivering the reports and maps back to the State EOC when the ARTs return to Raleigh.

NORTH CAROLINA EMERGENCY OPERATIONS PLAN (NCEOP)
ANNEX A | APPENDIX 3 | TAB N
AERIAL RECONNAISSANCE TEAMS (ART)
2025

III. ART INFORMATION MISSION OBJECTIVES

ART information mission objectives identify the status of Infrastructure and mass care structures for each affected county.



Priorities include:

- A. Telephone and communications towers
- B. Electrical power lines
- C. Roads and Bridges
- D. Health/Medical Facilities
- E. Waste and Water Treatment Plants and Systems
- F. Airports and Railroads
- G. Main Government buildings
- H. Shelters
- I. Mapped areas of significantly impacted areas