

NORTH CAROLINA EMERGENCY OPERATIONS PLAN (NCEOP)  
**ANNEX A | APPENDIX 9**  
**SERT HOMELAND SECURITY SECTION**  
2025

**I. PURPOSE**

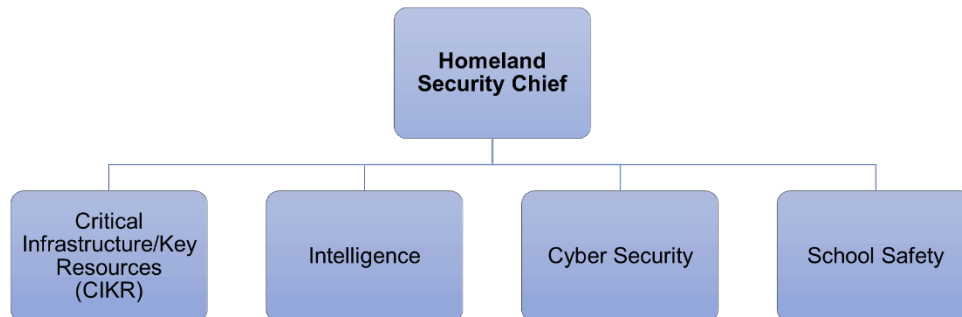
This appendix describes the Homeland Security Section of the State Emergency Response Team (SERT) during activation. The core functions performed by the SERT Homeland Security Section are pliable for an all-hazards approach regardless of geographical area.

**II. MISSION**

The Homeland Security Section is a multi-functional section with roles that conjoin with other NCEM sections during SERT activations. The Homeland Security Section maintains liaison with federal, state, tribal, local and private sector partners in supporting statewide critical infrastructure response, intelligence gathering assistance and monitoring, and cyber response and connectivity to emergency services. The Homeland Security Section also provides situational awareness to the NC Homeland Security Advisor (HSA) regarding operational activities being conducted during SERT activations.

**III. ORGANIZATION AND ASSIGNMENT OF RESPONSIBILITIES**

The Homeland Security Section Chief reports directly to the SERT Leader and will continually assess staff resources and needs as well as support other NCEM Sections during disaster/emergency/special events and address resource and/or staffing supplements as they develop. The Homeland Security Section Chief will act as the HSA advisor during SERT activations in conjunction with the SERT Leader who is dual rolled as the Deputy Homeland Security Advisor (DHSA). This support is intended to keep the HSA informed as to the mitigation, response and recovery efforts as well as maintaining connectivity with federal agency partners.



NORTH CAROLINA EMERGENCY OPERATIONS PLAN (NCEOP)  
**ANNEX A | APPENDIX 9**  
**SERT HOMELAND SECURITY SECTION**  
2025

**A. NC DEPARTMENT OF PUBLIC SAFETY (NCDPS)**

**NORTH CAROLINA EMERGENCY MANAGEMENT (NCEM)**

**HOMELAND SECURITY SECTION**

**1. CRITICAL INFRASTRUCTURE/KEY RESOURCES UNIT (CIKR)**

The CIKR unit is responsible for the writing, editing and maintaining the Threat and Hazard Identification and Risk Assessment Plan (THIRA) as well as maintaining active liaison with critical infrastructure partners at the federal, state, local, tribal and private levels. Depending on the nature of the SERT activation, CIKR is prepared to provide proactive outreach through this partnership network, allowing other SERT members to prepare assets and resources as effectively and efficiently as possible.

**2. INTELLIGENCE UNIT**

The Homeland Security Sections maintains a staff of two (2) analysts, who, depending on the nature of the SERT activation, will conduct proactive threat and information gathering as contained within NC Information Sharing and Analysis Center (NCISAAC), in support of the overall strategic deployment of staffing and resources. These analysts are capable of being dual rolled (i.e. medical support services, etc.) to support SERT activations where intelligence gathering can be operationalized by other NCISAAC personnel.

**3. CYBER UNIT**

The Homeland Security Section Cyber Unit is responsible for coordinating pre-established cyber support/response team members from the NC National Guard (NCNG), NC Department of Information Technology (NCDIT), NC Local Government Information Security Association (NCLGISA) as well as the FBI and other federal partners. The flexibility and outreach capabilities of this unit allow for a multifaceted cyber approach supporting the designated SERT activation.

**4. SCHOOL SAFETY**

The Homeland Security Section coordinates with all North Carolina school districts, along with the NC Department of Public Safety (NCDPS) Center for Safer Schools and other SERT partners to implement the State Emergency Response Application (SERA), School Risk Management Plans

## **SERT HOMELAND SECURITY SECTION**

2025

(SRMP) and the statewide Panic Alarm solution, all of which are designed to help coordinate first responders, law enforcement and emergency management response to hazards and threats at school facilities.

Leveraging data and information documented in SRMP, SERA efficiently presents profile and process information and spatially displays school floor plans, key assets, and vulnerabilities for first responders and law enforcement assets which are also aligned with the Panic Alarm solution.

### **IV. TABS**

#### **A. Cybersecurity**